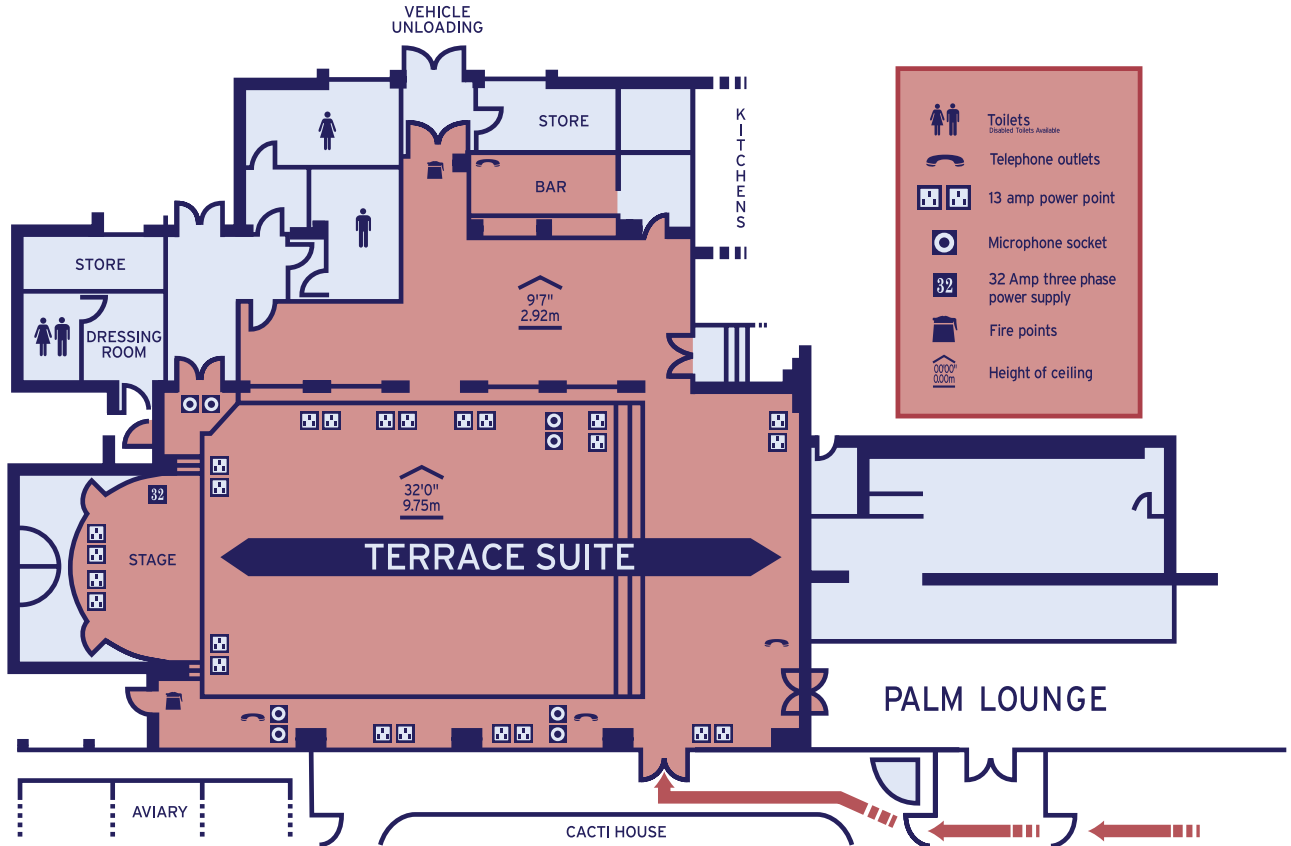


Birmingham Botanical Gardens Terrace Suite



Terrace Suite

Room Specifications

Terrace Suite

Dimensions	Ft.Ins.	Metres
Length	94'5 1/2"	19.65
Width	32'6"*	9.91
Width plus border	39'3"	11.96
Maximum height	32'0"	9.75
Height to chandelier	N/A	N/A
Floor area	2529sq.ft.*	235.0sq.m.*
External door	height	6'6"
	width	6'10"
Stage	depth	14'5"
	width	20'4"
Well	length	47'11"
width		32'6"

Technical Data

3 phase supply	32 amp
13 amp power points	24
Audio system points	8
Telephone points ISDN 30*	5
ISDN 2	1
ISDN 2**	10
Direct loading: ground floor	Yes
Full blackout	Yes

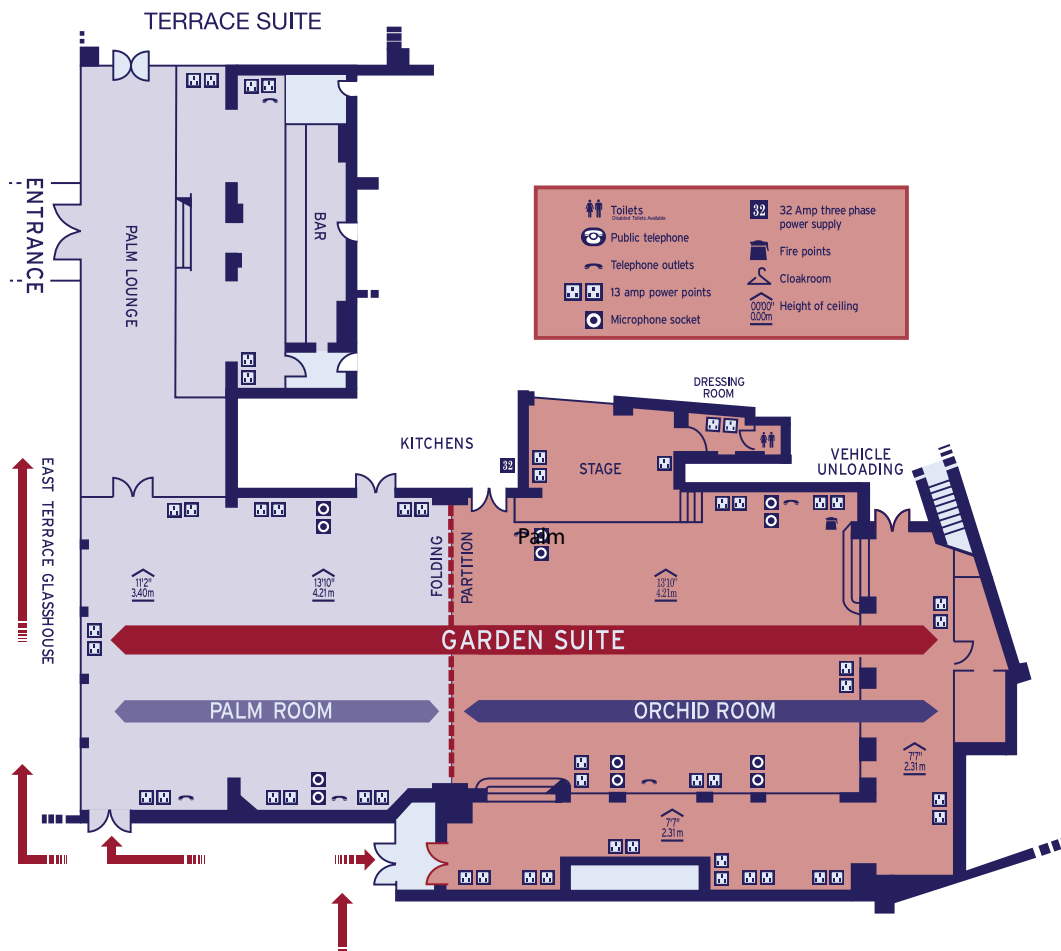
Capacities

Theatre / fashion show	350
Theatre and back projection	280
Classroom	100
Cocktail Party	250
Oval tables	192
Formal tables (sprigs)	170
Dinner Dance - floor uncovered	144

* Excludes lounge area

** Available at extra cost with 14 days notice

Birmingham Botanical Gardens Garden Suite



Garden Suite

Room Specifications

Garden Suite

Dimensions	Ft.Ins.	Metres
Length	99'0"	30.18
Length plus balcony	110'10 1/2"	33.80
Width	38'4 1/2"	11.70
Width plus balcony	50'10"	15.50
Maximum height	13'10"	4.21
Height to chandelier	11'2"	3.41
Floor area	5132sq.ft.	476.8sq.m.
External door	height 6'6"	2.08
	width 4'6"	1.98
Stage	depth 14'1"	4.29
	width 16'0"	4.88

Technical Data

3 phase supply	32 amp
13 amp power points	45
Audio system points	12
Telephone points ISDN 30*	5
ISDN 2	1
ISDN 2*	10
Direct loading: ground floor	Yes
Full blackout	Yes

Capacities

Theatre / fashion show	400
Theatre and back projection	350
Cabaret	200
Classroom	180
Cocktail Party	500
Oval tables	444
Formal tables (sprigs)	450
Dinner Dance - floor uncovered	384

Palm Room

Dimensions	Ft.Ins.	Metres
Length	46'11"	14.30
Length plus balcony	N/A	N/A
Width	40'3"	12.2
Width plus balcony	N/A	N/A
Maximum Height	11'2"	3.40
Height to chandelier	8'6"	2.59
Floor area	1878sq.ft.	174.5sq.m.
External door: height	6'6"	2.08
width	4'6"	1.98

Technical Data

3 phase supply	N/A
13 amp power points	14
Audio system points	4
Telephone points ISDN 30	2
ISDN 2	1
Direct loading: ground floor	Yes
Full blackout	Yes

* Available at extra cost with 14 days notice.

Orchid Room

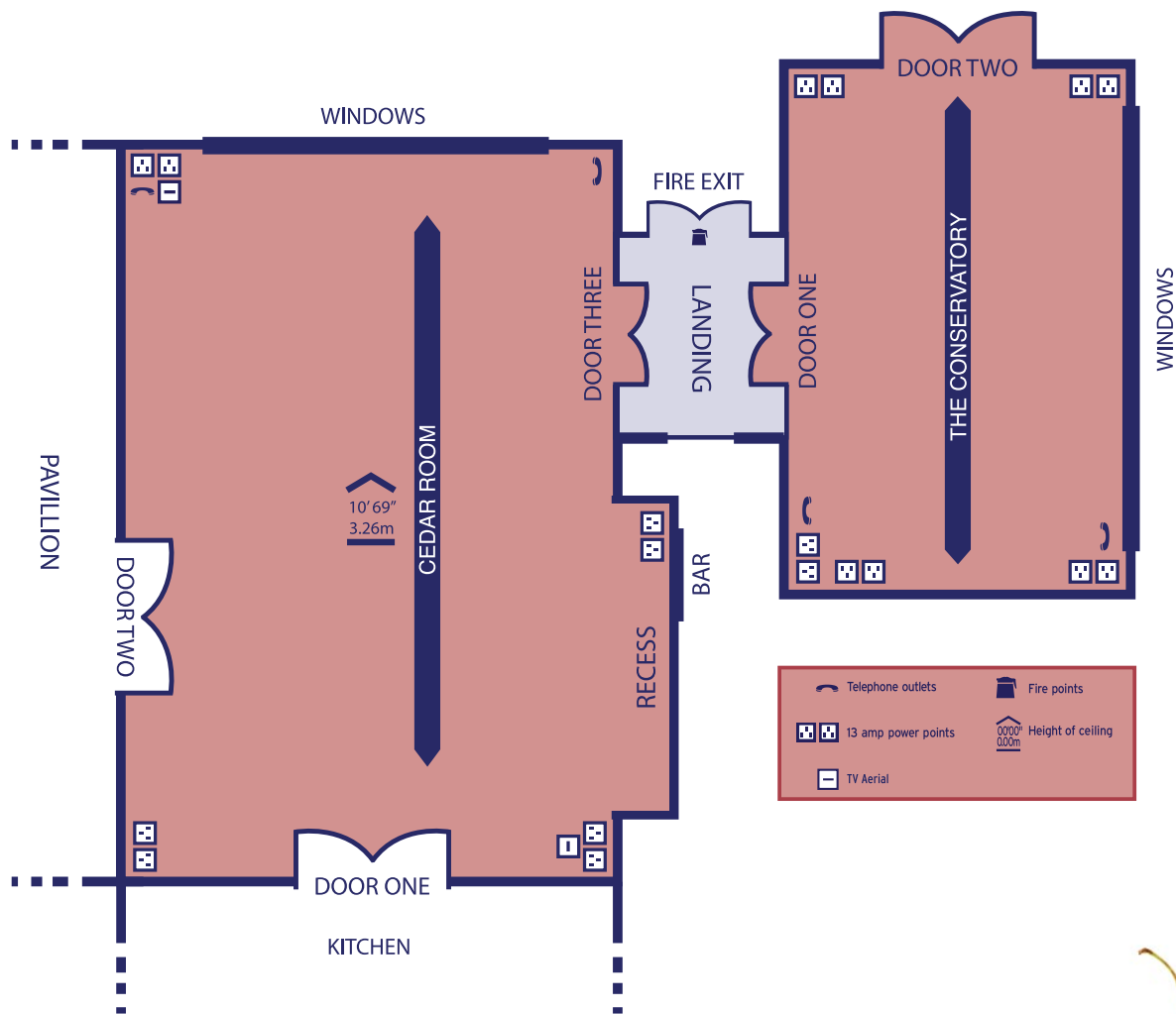
Dimensions	Ft.Ins.	Metres
Length	52'0"	15.85
Length plus balcony	63'11 1/2"	19.50
Width	38'4 1/2"	11.70
Width plus balcony	50'10"	15.50
Maximum height	13'10"	4.21
Height to chandelier	11'12"	3.41
Floor area	3253sq.ft.	302.25sq.m.
External door: height	6'6"	2.08
width	4'6"	1.98
Stage: depth	14'1"	4.29
width	16'0"	4.88

Technical Data

3 phase supply	32 amp
13 amp power points	31
Audio system points	8
Telephone points ISDN 30	3
Direct loading: ground floor	Yes
Full blackout	Yes

* Available at extra cost with 14 days notice.

Birmingham Botanical Gardens Loudon Suite



Loudon Suite

Room Specifications

Cedar Room

Dimensions		Ft.Ins.	Metres
Length		31'3"	9.54
Width		20'1"	6.14
Maximum height		10'7"	3.26
Floor area		629.1sq.ft.	58.5sq.m.
Door one	height	6'6"	1.37
	width	5'74"	1.75
Door two	height	6'6"	1.37
	width	6'8"	2.07
Door three	height	6'6"	1.37
	width	5'4"	1.64
Recess	depth	2'5"	0.79
	width	7'9"	2.42
Bar	width	4'2"	1.3

Technical Data

3 phase supply	No
13 amp power points	8
TV Aerial socket	1
Telephone points	1
BT Openzone Wifi	Yes
Full blackout	Yes

The Conservatory

Dimensions		Ft.Ins.	Metres
Length		25'2"	7.70
Width		14'1"	4.30
Floor area		355.3sq.ft.	33.1sq.m.
Door one	height	6'6"	1.37
	width	5'4"	1.64
Door two	height	6'6"	1.37
	width	5'4"	1.53

Technical Data

3 phase supply	32 amp
13 amp power points	10
Telephone points	1
Full blackout	No
BT Openzone Wifi	Yes

Landing

Dimensions		Ft.Ins.	Metres
Length		6'5"	2.0
Width		6'5"	2.0
Floor area		42.2sq.ft.	4.0sq.m.
Fire Exit	height	6'6"	1.37
	width	5'3"	1.63

Capacities

Theatre style	60
Theatre and front projection	40
Classroom	36
Cocktail Party	80
Oval tables	60
Formal tables (sprigs)	58
Dinner	60